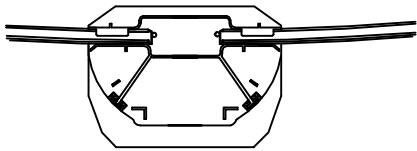


# Assembly Instructions: Bottom Rail, Boot, and Accent Clips

The bottom rail is inserted up to the dimple only.



Please note the different bottom tracks.

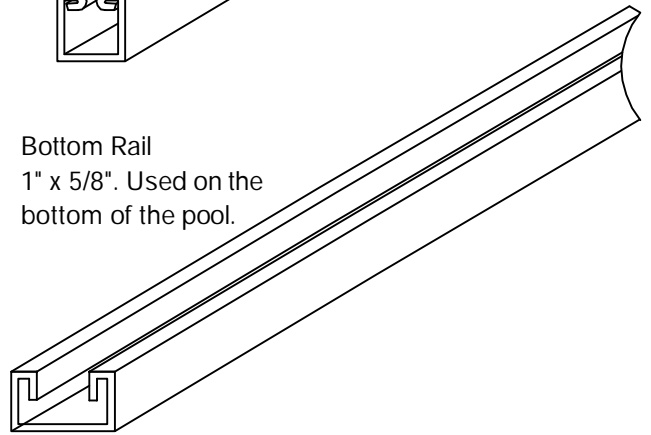
Resin bottom Track

Metal Bottom Track

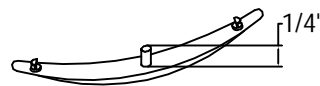
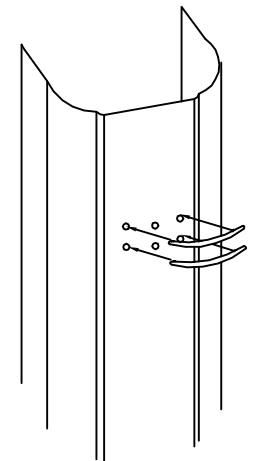
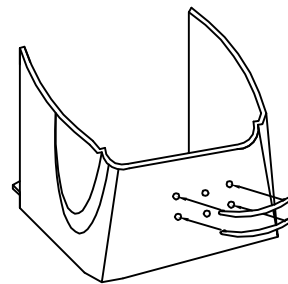
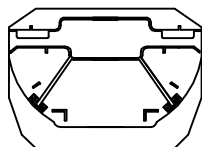
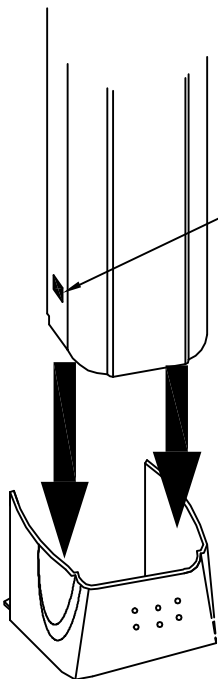
Inner Stabilizer  
5/8" x 5/8" Used on  
the top of the pool.



Bottom Rail  
1" x 5/8". Used on the  
bottom of the pool.



Be sure that the holes  
in the upright line up  
with the clips in the  
boot, and that snap  
securely in place.



Please note the difference of the accent clips for the  
resin boot and the steel Upright. For proper fit be  
sure to use the correct clips.