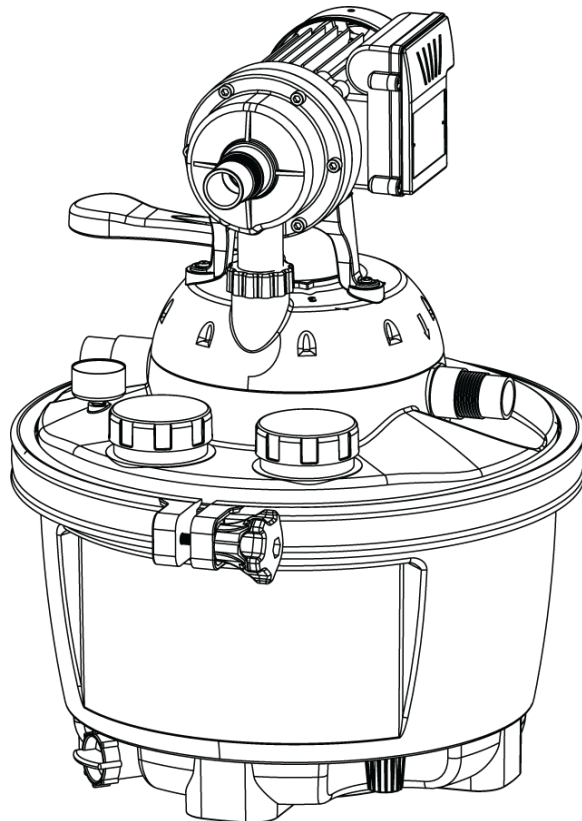


SandPro™ POOL FILTER SYSTEM OWNER'S MANUAL

Model 4515

IMPORTANT SAFETY RULES

Read all instructions BEFORE assembling and using this product.
KEEP THIS MANUAL.



Sand not included. USE ONLY No. 20 Silica Sand with a particle size of 0.45 mm – 0.55 mm

IMPORTANT DO NOT RETURN PRODUCT TO STORE

For technical assistance and missing parts, call Customer Service toll-free

1.888.339.2546

(press 135 at any time)

Monday through Friday, 8 am to 5:00 pm MST

Saturday, 8:00 am to 1:00 pm MST

NOTE: SEE WEB (www.game-group.com) FOR INSTRUCTION UPDATES.



SAFETY WARNINGS

READ ALL WARNINGS BELOW. FAILURE TO DO SO COULD RESULT IN SERIOUS PERSONAL INJURY OR DEATH.

IMPORTANT SAFETY INSTRUCTIONS

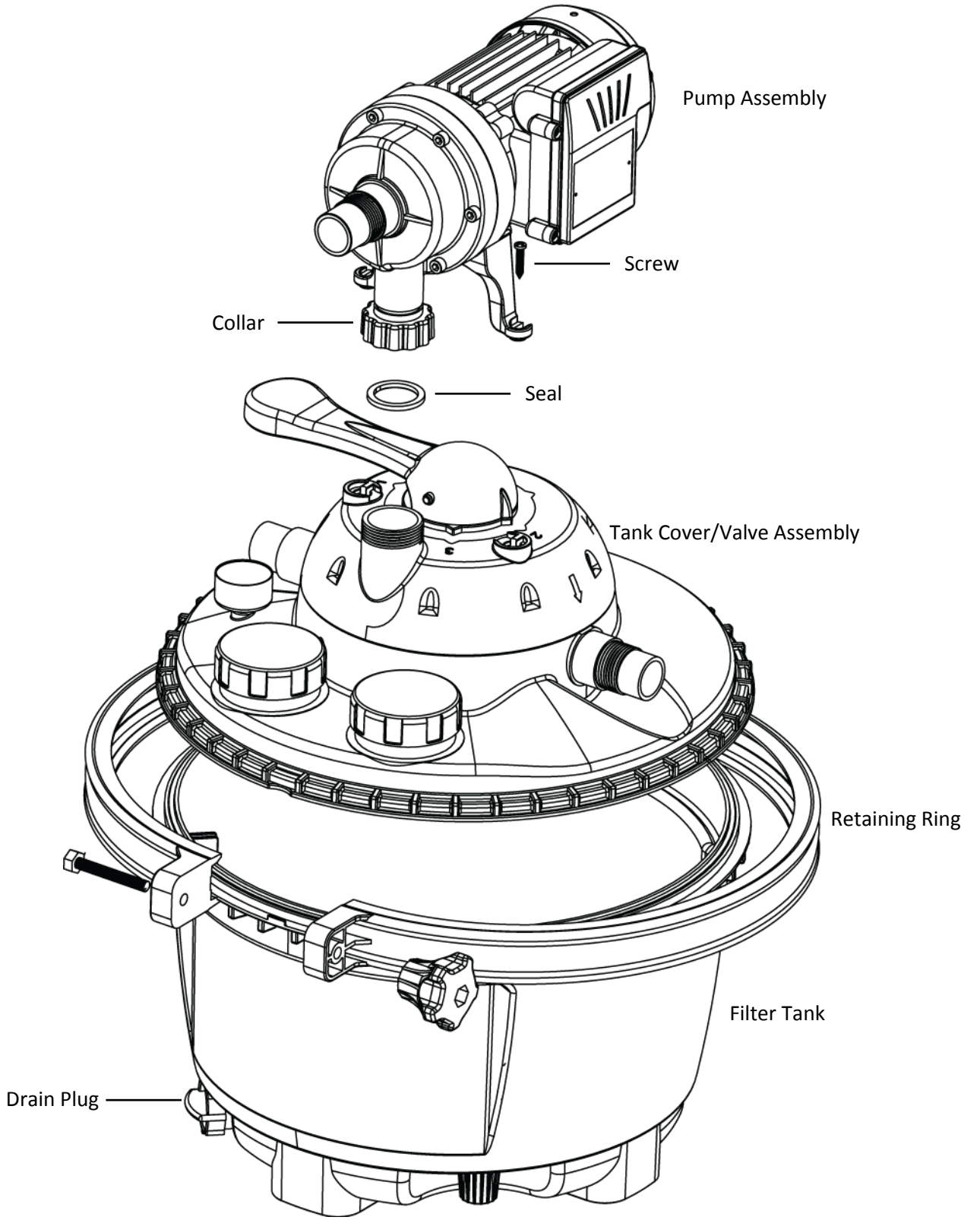
When installing and using this electrical equipment, basic safety precautions should always be followed, including the following:

READ AND FOLLOW ALL INSTRUCTIONS

- **WARNING** – To reduce the risk of injury, do not permit children to use this product unless they are closely supervised at all times.
- **WARNING** – Risk of Electric Shock. Connect only to a grounding type receptacle protected by a ground-fault circuit-interrupter (GFCI). Contact a qualified electrician if you cannot verify that the receptacle is protected by a GFCI.
- Do not bury cord. Locate cord to minimize abuse from lawn mowers, hedge trimmers, and other equipment.
- **WARNING** – To reduce the risk of electric shock, replace damaged cord immediately.
- **WARNING** – To reduce the risk of electric shock, do not use extension cord to connect unit to electric supply; provide a properly located outlet.
- **CAUTION** – This pump is for use with storable pools only. Do not use with permanently installed pools. A storable pool is constructed so that it is capable of being readily disassembled for storage and reassembled to its original integrity. A permanently-installed pool is constructed in or on the ground or in a building such that it cannot be readily disassembled for storage.
- **RISK OF SUCTION ENTRAPMENT HAZARD, WHICH, IF NOT AVOIDED CAN RESULT IN SERIOUS INJURY OR DEATH.**
- Do not block pump suction at the pump or in the pool as this can cause severe injury or death.
- Incorrectly installed equipment may fail, causing severe injuries or damage to the pump-filter system.
- Never place or submerge the filter and/or pump in water.
- Trapped air in the pump-filter system may cause the tank cover to be blown off which can result in death, serious injury, or damage to the pump-filter system. Ensure all air is out of system before operating.
- NEVER use the valve lever as a handle to carry or lift the filter.
- NEVER change the position of the Multi-Port Valve while the system is operating. ALWAYS unplug the system first.
- Install this product at least 10 feet away from the pool to prevent children from using the system to access the pool.
- Never PLUG or UNPLUG this unit from an electrical source while standing in water or with wet hands.
- NEVER service this unit with the electrical power cord connected.
- Do not use any petroleum based lubricant. Petroleum based products will destroy plastic parts.
- Do NOT operate the system while the pool is in use.
- KEEP CHILDREN AWAY from all electrical equipment.

SAVE THESE INSTRUCTIONS.

THESE SAFETY WARNINGS ARE NOT INTENDED TO INCORPORATE ALL POSSIBLE INSTANCES FOR RISK AND/OR SEVERE INJURY.



Assembly Instructions:

1. Open the filter tank by removing retaining ring and remove all parts.
2. Fill sand chamber with sand (See figure 2)

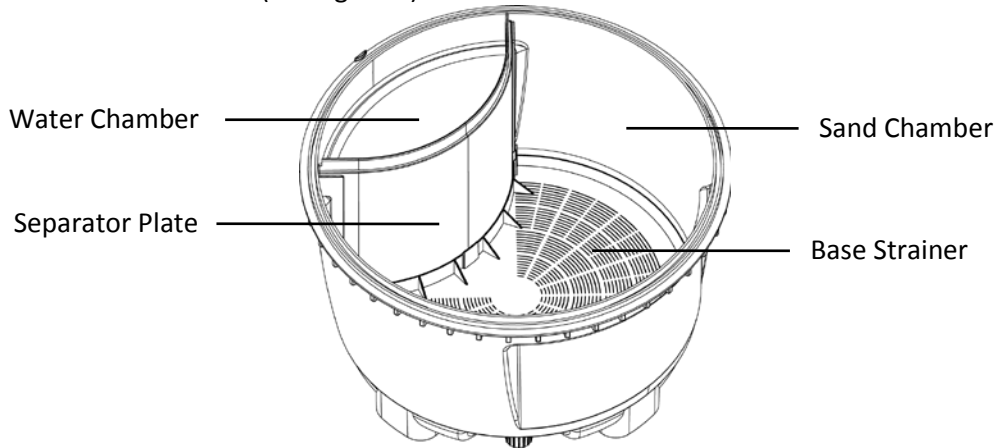


Figure 2

Note: The tank should be in its permanent location before filling the chamber with sand. Otherwise, the unit will be heavy and difficult to move around.

- a. Check to ensure that the bottom strainer is correctly positioned.
- b. Check to ensure that the tank separator plate is seated properly.
- c. Fill the sand chamber half full with water.

Caution: Use breathing filter/mask approved for dust and sand and adequate eye protection while filling the tank. Avoid breathing dust.

Important: To prevent damage to the container and the bottom strainer, fill the tank halfway with water before adding the filter sand.

- d. Pour 26 lb of Number 20 silica sand into the sand filter chamber being careful not to allow any sand to enter the filtered water chamber.
3. Attach tank cover and lock into place using retaining ring. Ensure the main tank seal around the top of the filter tank is in good condition and securely seated in the groove. Be sure it is free of sand.
 - a. Carefully place the tank cover onto the filter tank. The tank cover should be oriented so that the notch on the cover is aligned with the matching tab on the filter tank – this ensures proper alignment.
 - b. When tight, the gap between the clamp halves at the tightening screw should be approximately 1/16" to 1/4". (See figure 3)

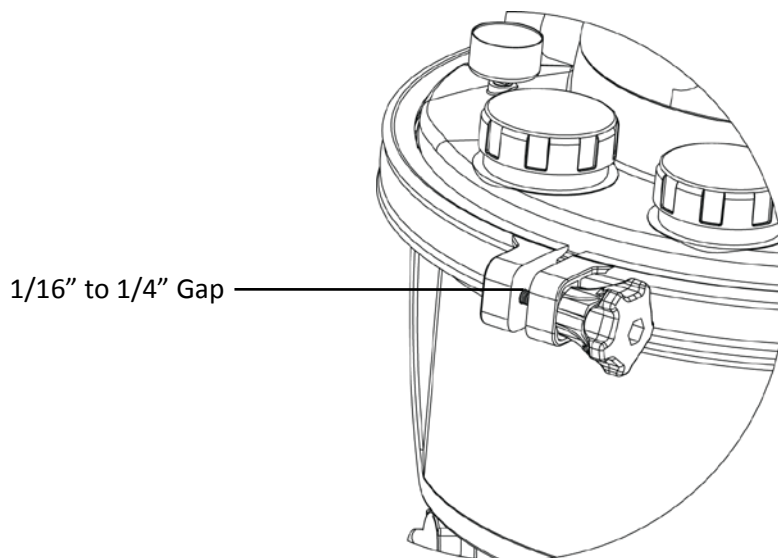


Figure 3

Note: Using a rubber mallet to lightly tap around the outside of the ring assembly as you are tightening. This will ease the installation of the ring assembly.

4. Attach motor to top and secure with the 2 screws and washers included. Tighten collar, making sure the seal is installed to prevent leaks (See figure 4)

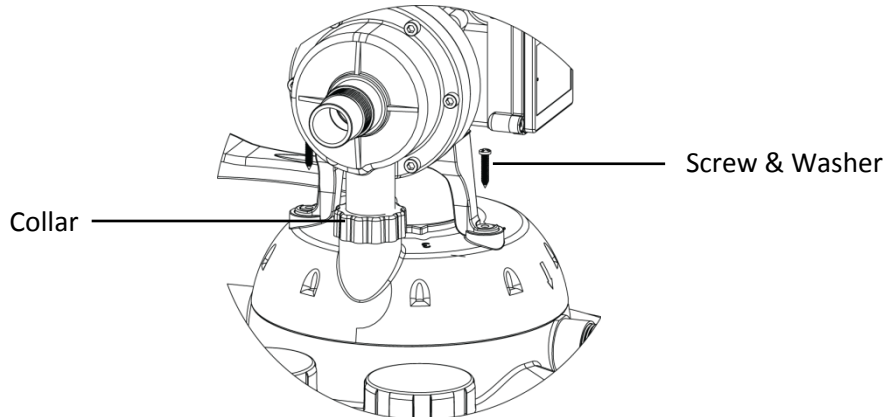


Figure 4

5. Attach the intake and return hoses using the hose clamps provided (See figure 5).

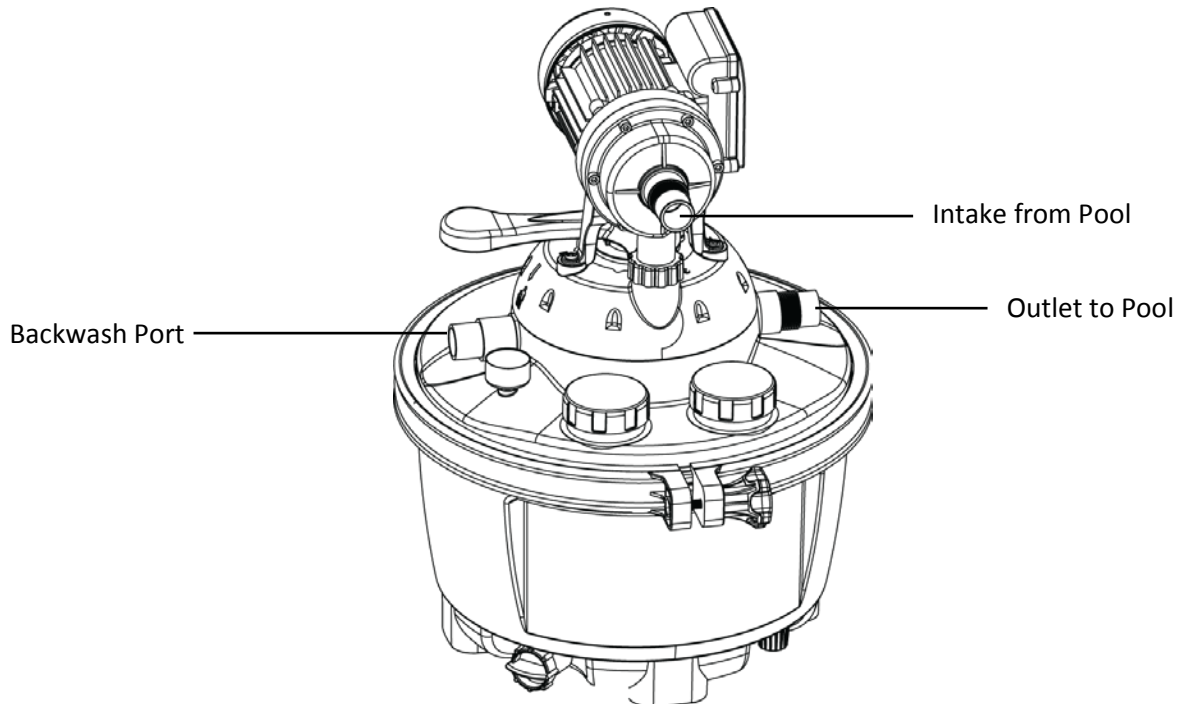


Figure 5

Caution: Ensure ALL hose connections are tight and the hoses are NOT kinked or bent at severe angles. If the hoses are leaking, check the tightness of the hose clamps. DO NOT over tighten hose clamps (35 in/lb max torque).

First time use:

The filtering system is ready for use when the filter tank has been filled in accordance with the instructions, and the hoses have correctly attached.

Ensure that the pump is placed below the water line and that the water flows to the pump from the pool via the intake hose. Switch on the pump and wait until it starts to draw in water in a normal fashion. Where necessary, this can be repeated several times.

NOTE: The filter sand should be manufactured according to the standard DIN 12094. Filter sand that is manufactured according to this standard has no more than 10% grit below the specified grain size. Small pieces of grit are prone to whirling into the pool and resting on its bottom until they are completely rinsed away by the filter tank.

Filter Use:

The water in a swimming pool should be cleansed through the filter tank 2-4 times a day, depending on how much water the pool holds and the cleaning capacity of the filtering device. If the weather and the pool water were warm, there is always a need for increased filtering and chemical cleansing of the water. During warm periods, the pool is likely to be used more frequently which further increases the demands on the cleansing of water.

We recommend the use of a simple, cheap outdoor timer, enabling automatic switching on and off the pump. It is usually completely unnecessary to run the pump around the clock, and regularly scheduled breaks where the motor can cool off extends the life of the pump.

A sand filter system should have the capacity required to clean all the water in the pool at least every 5 hours. If this basic condition is met, and the water is otherwise problem free, the following general rule can be used to determine for the required filtration time.

The filter system should run in hours for half of the pools temperature in degrees Celsius.

Example: If the water temperature is 75°F (24°C), the filter system is set to run for 12 hours per day. If the water temperature rises to 82°F (28°C), the filtration time increases to 14 hours per day.

Backwash:

The filtering continually causes accumulation of dirty particles in the filter sand. This accumulation causes an increasing resistance in the filter tank as the water is pressed through the filter material.

The pressure gauge shows the pressure inside the tank. If the pressure should rise by 3-4 PSI above the original pressure measurement when the filter sand was new and clean, the filter needs a backwash.

The filter sand must be cleansed from dirty particles regularly. This is done by backwashing, the water current is changed to remove the dirty particles and wash out the sand. The unclean backwashed water is then diverted to the backwash outlet.

Note: The pump should ALWAYS be turned off before changing the filter position with the three way handle. NEVER change the handle position while the pump is running as this can damage the over head valve and bring sand into the pool!

- Turn off the filter pump!
- Place handle in position 2 "backwash".
- Make sure a hose is attached to the backwash valve, or the water will gush from the filter tank. If needed, a special flat and compact backwash hose can be purchased.
- Turn on the pump again and let it run until the pumped-out water changes from dirty to clean. This will take about 5 minutes.
- Turn off the filter pump!
- Set the handle to position 1 "Filtration"
- Turn on the pump.
- The filter system is now ready for use again.

NOTE: keep in mind that the dirty return water should be easy to divert before the backwash procedure starts – remember the backwash hose!

In addition, remember that the backwash procedure must NOT be stopped before it is completed! Check in advance that there is sufficient water in the pool to carry out a backwash before it is started.

3 way valve:

The filtering system is an economic basic model that is equipped with a 3-way valve on the filter tank's lid, so that the cleaning can be controlled manually. Press the handle down with the palm of your hand and turn it to the desired position. The following working positions are possible.

1. Filtering- Water from the pool is pressed through the filter tank and pumped back to the pool.
2. Backwash- Water from the pool is pressed through the filter tank and is pumped back to an external outflow. Cleansing of collected impurities in the filter sand.
3. Closed- All valve outlets are closed and water cannot circulate.

NOTE: the 3-way handle on the filter tank valve must never be used in an attempt to lift the filter tank! The handle is not constructed for this purpose and such an attempt may cause the handle to break.

Maintenance:

Interval	Action
Weekly	Clean the per-filter basket. Carry out the backwash regardless of how dirty the filter is.
Annual	Get the filter system ready for winter before there are frosts. Replace the filter sand in early spring before the sand filter is put into use again.

NOTE: This filter system should not be used without a permanently installed skimmer in the pool. Alternatively, a small leaf filter or floating surface-skimmer is used in the pool, assuming the pool is plastic with solid sides. The skimmer captures leaves, twigs, and branches etc. that would otherwise collect in the pump and totally block it. The pump is easily destroyed by such and the guarantee does not cover such damage.

Problems and Problem Solving:

Problem	Cause	Solution
The pressure gauge shows a pressure exceeding 14 PSI.	Dirty filter sand	Carry out a backwash
Pressure is too low	Suction hose/skimmer basket may be blocked	Clean suction hose/pool skimmer.
Water escapes from the backwash valve.	The gasket around the 3 way valve is dirty and leaking. Grit in the gasket.	The 3 way valve should be removed from the filter lid, the gasket should be cleaned.
Leaking filter	Damaged gasket	Inspect the gasket and replace with a new one if necessary.
The pump is not working	The filter system has been deactivated by the filter time or a filter control. The HFI device turns the pump off. The plug is not connected. Damaged pump motor.	Examine the settings Turn on the HFI device again. If it immediately turns itself off again this means that the pump or the HFI device is damaged. Reconnect plug. Replace the pump.
Sand in the pool.	If the filter sand is new, there are other pieces of grit that have fastened in the filter. The separator wall in the filter tank is not correctly positioned. The base plate is damaged.	Carry out repeated backwash until the backwash return water is totally clear. Correctly located the separator wall in the filter tank. Exchange the damaged plate for a new one.

Repairs of the sand filter and pump may only be performed by a qualified, professional firm. Otherwise, the warranty will be void.

Limited Warranty Statement

The manufacturer warranties safe operation and reliability only under the following conditions:

The filter system is installed and operated according to the assembly and operating instructions.

Only original replacement parts are used.

Consumable parts do NOT fall under the warranty.

Expendable parts do NOT fall under the warranty. These include:

- All O-rings (40x5 mm O-ring for tank cover, 105x5 mm O-ring for pump cover, 58x6 mm O-ring for housing, 50x3 mm O-rings for hose connections, 6x2 mm O-rings for screws)
- Pressure Gauge
- Hair & Lint Strainer Basket
- Mechanical Seal, Complete
- Filter-to-Pump Hose

General Terms

This Limited Warranty applies to the enclosed product (the "Product") distributed by Great American Duck Races, Inc., an Arizona corporation doing business as Great American Marketing and Events ("GAME").

GAME warrants that the Product will be free from defects in materials and workmanship under normal use for a period of three (3) years from the date of purchase. (Your dated sales or delivery receipt, showing the date of your Product purchase, is your proof of the purchase date.) During the warranty period, GAME will repair or replace any defective parts at no charge.

All defective parts that are replaced by GAME will be replaced, at GAME's discretion, with either new parts or used parts that meet or exceed performance specifications for new parts. All parts removed from the Product under this warranty will become the property of GAME. Repair or replacement of any parts will not serve to extend the warranty period.

This Limited Warranty does not apply to expendable parts. This Limited Warranty does not extend to any product (a) from which the serial number has been removed or (b) that has been damaged or rendered defective (i) as a result of accident, misuse, abuse or other external causes; (ii) by operation outside the usage parameters stated in the manual that shipped with the Product; (iii) by the use of parts not manufactured or sold by GAME; or (iv) by modification or service by anyone other than GAME or an authorized GAME distributor.

If a defect is identified within the warranty period, please contact GAME.

EXCEPT FOR THE LIMITED WARRANTY SET FORTH ABOVE, GAME EXPRESSLY DISCLAIMS ALL OTHER WARRANTIES, WHETHER EXPRESSED OR IMPLIED, ORAL OR STATUTORY (INCLUDING, WITHOUT LIMITATION, WARRANTIES OF MERCHANTABILITY AND FITNESS FOR A PARTICULAR PURPOSE). ANY IMPLIED WARRANTIES THAT MAY BE IMPOSED BY LAW ARE LIMITED TO THE TERMS OF THE ABOVE LIMITED WARRANTY.

Limitation of Liability

EXCEPT FOR THE LIMITED WARRANTY DESCRIBED ABOVE, IN NO EVENT WILL GAME HAVE ANY LIABILITY OF ANY KIND WHATSOEVER (WHETHER UNDER CONTRACT, TORT, OR ANY OTHER THEORY OF LEGAL LIABILITY) TO ANY PERSON WITH RESPECT TO THE PRODUCT (INCLUDING, WITHOUT LIMITATION, (A) ANY USE OR MISUSE OF THE PRODUCT, (B) ANY FAILURE OR MALFUNCTION OF THE PRODUCT, (C) ANY BODILY INJURY, DEATH, LOSS OF OR DAMAGE TO ANY PROPERTY, OR ANY OTHER DAMAGES RELATED TO OR RESULTING FROM THE PRODUCT OR ITS USE (INCLUDING, WITHOUT LIMITATION, ANY SPECIAL, INCIDENTAL, CONSEQUENTIAL OR PUNITIVE DAMAGES, LOST PROFITS, LOSS OF USE), EVEN IF GAME OR GAME'S AUTHORIZED REPRESENTATIVES HAVE BEEN ADVISED OF THE POSSIBILITY OF ANY SUCH DAMAGES.

Severability

Any provision of this Limited Warranty which is prohibited or unenforceable in any jurisdiction will, as to such jurisdiction, be ineffective to the extent of such prohibition or unenforceability without invalidating the remaining portions hereof or affecting the validity or enforceability of such provision in any other jurisdiction.

Venue and Choice of Law

This Limited Warranty is applicable in all countries. This Limited Warranty will be governed by the laws of the State of Arizona (regardless of any conflict of laws rules), and any disputes arising from this Limited Warranty will be resolved in Phoenix, Arizona.

Entire Agreement

This Limited Warranty is understood to be the complete and exclusive agreement between GAME and the purchaser of the Product, superseding all prior agreements, oral or written, and all other communications between such parties relating to the Product. No employee or representative of GAME or any other party is authorized to make any warranty in addition to the limited warranty set forth above.