



Spas that free your mind.



110-120V 60Hz 1200W

Read this manual before operating


IMPORTANT SAFETY INSTRUCTIONS

When using this electrical equipment, basic safety precautions should always be followed, including the following:

1. READ AND FOLLOW ALL INSTRUCTIONS.

2. **WARNING** – To reduce the risk of injury, do not permit children to use this product unless they are closely supervised at all times.

3. A wire connector is provided on this unit to connect a minimum 6 AWG (13.3 mm²) solid copper conductor between this unit and any metal equipment, metal enclosures of electrical equipment, metal water pipe, or conduit within 5 feet (1.5 m) of the unit.

4. A green coloured terminal or a terminal marked G, GR, Ground, Grounding, or the  symbol* is located inside the supply terminal box or compartment. To reduce the risk of electric shock, this terminal must be connected to the grounding means provided in the electric supply service panel with a continuous copper wire equivalent in size to the circuit conductors supplying this equipment.

*IEC Publication 417, Symbol 5019.

5. At least two lugs marked “BONDING LUGS” are provided on the grounding compartment (The two lugs are on the junction box). To reduce the risk of electric shock, connect the local common bonding grid in the area of the hot tub or spa to these terminals with an insulated or bare copper conductor not smaller than No. 6 AWG.

6. All field installed metal components such as rails, ladders, drains or other similar hardware within 3 m of the spa or hot tub shall be bonded to the equipment grounding bus with copper conductors not smaller than No. 6 AWG.

7. **DANGER** – Risk of injury.

a) Replace damaged cord immediately.

b) Do not bury cord.

c) Connect to a grounded, grounding type receptacle only.

8. **WARNING** – This product is provided with a ground-fault circuit-interrupter integrated in the power plug (It is in the plug). The GFCI must be tested before each use. With the product operating, open the service door. When the product stops operating, this merely indicates that the door is equipped with an electrical interlock. Next, push the test button on the GFCI and close the service door. The product should not operate. Now open the service door, push the reset button on the GFCI and close the service door.

The product should now operate normally. When the product fails to operate in this manner, there is a ground current flowing indicating the possibility of an electric shock. Disconnect the power until the fault has been identified and corrected.

9. **DANGER** – Risk of Accidental Drowning. Extreme caution must be exercised to prevent unauthorized access by children. To avoid accidents, ensure that children cannot use this spa unless they are supervised at all times.

10. **DANGER** – Risk of Injury. The suction fittings in this spa are sized to match the specific water flow created by the pump. Should the need arise to replace the suction fittings or the pump, be sure that the flow rates are compatible.

Never operate spa if the suction fittings are broken or missing. Never replace a suction fitting with one rated less than the flow rate marked on the original suction fitting.

11. **DANGER** – Risk of Electric Shock. Install at least 5 feet (1.5 m) from all metal surfaces. As an alternative, a spa may be installed within 5 feet of metal surfaces if each metal surface is permanently connected by a minimum 6 AWG (13.3 mm²) solid copper conductor to the wire connector on the terminal box that is provided for this purpose.

12. **DANGER** – Risk of Electric Shock. Do not permit any electric appliance, such as a light, telephone, radio, or television, within 5 feet (1.5 m) of a spa.

13. **WARNING** – To reduce the risk of injury:

a) The water in a spa should never exceed 104°F (40°C). Water temperatures between 100°F (38°C) and 104°F (40°C) are considered safe for a healthy adult. Lower water temperatures are recommended for young children and when spa use exceeds 10 minutes.

b) Since excessive water temperatures have a high potential for causing fetal damage during the early months of pregnancy, pregnant or possibly pregnant women should limit spa water temperatures to 100°F (38°C).

c) Before entering a spa, the user should measure the water temperature with an accurate thermometer since the tolerance of water temperature-regulating devices varies.

d) The use of alcohol, drugs, or medication before or during spa use may lead to unconsciousness with the possibility of drowning.

e) Obese persons and persons with a history of heart disease, low or high blood pressure, circulatory system problems, or diabetes should consult a physician before using a spa.

f) Persons using medication should consult a physician before using a spa since some medication may induce drowsiness while other medication may affect heart rate, blood pressure, and circulation.

14. SAVE THESE INSTRUCTIONS.

WARNING: CHILDREN SHOULD NOT USE SPAS OR HOT TUBS WITHOUT ADULT SUPERVISION

WARNING: DO NOT USE SPAS OR HOT TUBS UNLESS ALL SUCTION GUARDS ARE INSTALLED TO PREVENT BODY AND HAIR ENTRAPMENT

WARNING: PEOPLE USING MEDICATIONS AND/OR HAVING AN ADVERSE MEDICAL HISTORY SHOULD CONSULT A PHYSICIAN BEFORE USING A SPA OR HOT TUB

WARNING: PEOPLE WITH INFECTIOUS DISEASES SHOULD NOT USE A SPA OR HOT TUB

WARNING: TO AVOID INJURY, EXERCISE CARE WHEN ENTERING OR EXITING THE SPA OR HOT TUB

WARNING: DO NOT USE DRUGS OR ALCOHOL BEFORE OR DURING THE USE OF A SPA OR HOT TUB TO AVOID UNCONSCIOUSNESS AND POSSIBLE DROWNING

WARNING: PREGNANT OR POSSIBLY PREGNANT WOMEN SHOULD CONSULT A PHYSICIAN BEFORE USING A SPA OR HOT TUB

WARNING: WATER TEMPERATURE IN EXCESS OF 100° (38°C) CAN BE INJURIOUS TO YOUR HEALTH

WARNING: BEFORE ENTERING THE SPA OR HOT TUB, MEASURE THE WATER TEMPERATURE WITH AN ACCURATE THERMOMETER

WARNING: DO NOT USE A SPA OR HOT TUB IMMEDIATELY FOLLOWING STRENUOUS EXERCISE

WARNING: PROLONGED IMMERSION IN A SPA OR HOT TUB CAN BE INJURIOUS TO YOUR HEALTH

WARNING: DO NOT PERMIT ELECTRIC APPLIANCES (SUCH AS A LIGHT, TELEPHONE, RADIO, OR TELEVISION) WITHIN 1.5 M OF THIS SPA OR HOT TUB

CAUTION: MAINTAIN WATER CHEMISTRY IN ACCORDANCE WITH MANUFACTURER'S INSTRUCTIONS

Part I Package List

Check to make sure all parts are present:

SPA Pool Box



SPA Pool x1 (including cover)



SPA Pump Box x1

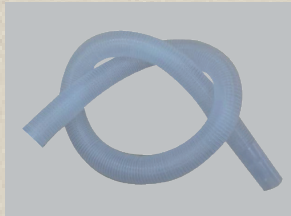


Accessories Kit* x1

SPA Pump Box



Pump, NPP5030 x1



Drain Hose, NPP5031 x1

*Accessories Kit Part Nos. :
(pictured below)
Stopper Cap, NPP5034
Stopper, NPP5035
Repair Patch, NPP5036
Valve, NPP5037

**For replacement parts
please call 800-759-0977**



Disregard extra hose

Connection Hose, NPP 5032 x3



Inflation Hose, NPP5033 x1



1 extra filter included

Filter Cartridge, NFC570-4 x1

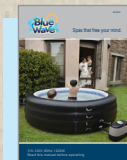
Accessories Kit*



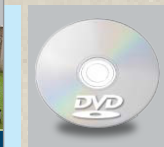
Stopper Caps x3



Stopper x1



Manual x1



DVD x2



Repair Patch x1



Valve x1

There is a security label in the Accessories Kit. Before you install the SPA, the security label should be stuck to a wall or a bracket within 1.5 meter around the SPA pool. The security label should be seen clearly by the SPA pool users. If the label is damaged, you should ask our local dealer or our after sales service to get another one.

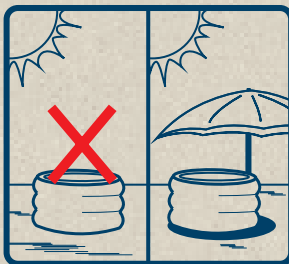
Part II Specifications

Item #	NP5767
Seating Capacity	2 Adults + 2 Children
SPA Dimension (outer)	Φ71" x 25" / 180cm x 65cm
SPA Dimension (inner)	Φ55" x 25" / 140cm x 65cm
Water Capacity	190 Gal. (720L)
Voltage	110-120V 60Hz
Heater	1200W
Air Blower	500W
Filter	40W
Max. Heat Temperature	104°F (40°C)
SPA Cover Material	Polyester Laminated PVC + Inflation Lid
SPA Bottom	Polyester Laminated PVC + PE Foam
Net Weight	59 lbs. (26.8kg)
Gross Weight	67.5 lbs. (30.6kg)
Package Dimension	24" x 17" x 22.6" / 61.5cm x 43.5cm x 57.5cm
Test Certificate	cETLus
Heating Efficiency(20°C)	1.5-2°C/h

Part III Installation

1. Site Selection

A place with an awning



A clean place



A level place



A place with an area more than 2.7 square yards (2.5 square meters).

A place that can support more than 7119 lb/f² (300 kg/m²).

Make sure you have all of the accessories according to the package list.

2. GFCI Test

WARNING: RISK OF ELECTRIC SHOCK. The GFCI plug must be tested before each use.

DO NOT use if GFCI test fails.

Insert the plug into the power outlet.


Press the "RESET" button, the indicator light turns red.

Press the "TEST" button, the indicator light turns off.

Press the "RESET" button, the indicator light turns red and the pump is ready to use.

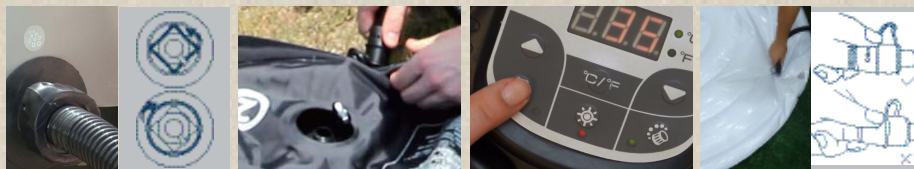


3. Assemble SPA Pool

1) Connect the inflation hose to the adapter on the pump according to the icon . Press the bubble button to inflate the pool according to the printed numbers 1,2,3. Do not hold the air drainage holes on the inflation hose when inflation. (If there is an inflation lid included in the SPA pool, inflate each chamber of the cover)

CAUTION: Do not over-inflate. Do not try to remove all of the wrinkles.

CAUTION: Do not cover the air drainage holes on pump hose adapter.



2) Adjust the outer cover and inflate the pool to 50% full, adjust the outer cover to make sure the holes on the cover match the inflation ports, check the top of the pool to make sure the cover is roughly a concentric ring. Then inflate until full.



4. Connect the Pump to the SPA Pool

Remove the inflation hose and attach the connection hoses of pump to the pool according to the icons of filtering function, heating function and bubbling function on the pool and the pump.



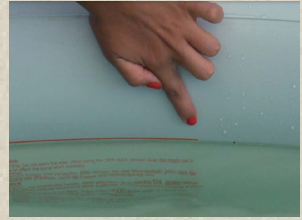
5. Install the Filter Cartridge

Make sure the filter cartridge is in the cover, then screw the filter cartridge onto the lower suction fitting.



6. Fill with Water

Check the stopper on the bottom of the pool and the drain cap, and make sure both of them are tight. Fill the pool with water from a garden hose until reaching the water level mark printed on pool inner wall.



Part IV Usage

1. Press the temperature setting button to select the desired temperature. Press the heating button to heat the water. Put on the cover while heating. If there is an inflation lid included with your SPA pool, put it below the cover.

When the water temperature reaches your set temperature, you can enjoy your SPA. Pressing the bubbling button to activate the massage system.

We suggest an appropriate temperature is around 100°F (38°C) to 104°F (40°C). It is not good for your health to exceed 30 minutes in the SPA. Taking that into account, the massage system will stop automatically after 30 minutes of operation. Re-activate the massage function by pressing the massage button again.



If you want to use the pool without the pump, use the stopper caps to prevent the water from running out of the pool.



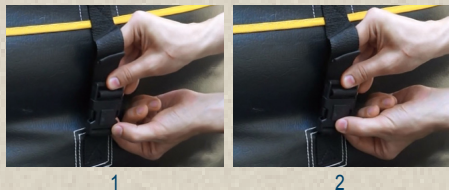
Hyperthermia occurs when the internal temperature of the body reaches a level several degrees above the normal body temperature of 98.6°F (37°C). The symptoms of hyperthermia include drowsiness, lethargy, and an increase in the internal temperature of the body. The effects of hyperthermia include:

- (a) unawareness of impending hazard;
- (b) failure to perceive heat;
- (c) failure to recognize the need to exit spa;
- (d) physical inability to exit spa;
- (e) fetal damage in pregnant women; and
- (f) unconsciousness and danger of drowning.

WARNING: THE USE OF ALCOHOL OR DRUGS CAN GREATLY INCREASE THE RISK OF FATAL HYPERTHERMIA IN HOT TUBS AND SPAS.

WARNING: WATER TEMPERATURES IN EXCESS OF 100°F (38°C) CAN BE HAZARDOUS TO YOUR HEALTH.

Locking the Buckle (if you have a cover)



1. Press the buckle.
2. Push up the middle part of the buckle.
3. Before you unlock the buckle, push down the middle part of the buckle.

2. Cleaning/Replacing Filter Cartridge

NOTE: A dirty filter cartridge may contaminate the pool water and cause damage to the heating function.

NOTE: When the filtering system has worked 150 hours accumulatively, a warning buzzer will remind you to clean the filter, at the same time, the light of the filtering function will flash. Hold the filtering button 5 seconds to turn off the buzzer.

1. Unscrew the filter house lid by turning it counter-clockwise. Remove the cover from the filter cartridge.
2. Rinse off the filter cartridge with a garden hose. We suggest using a garden hose with our Spray Brush Head*. Once cleaned, put the cover back on, and reuse it. If the filter cartridge remains dirty and discoloured, the filter cartridge should be replaced. *Spray brush head can be purchased separately.
3. Screw the cleaned filter cartridge back on the pool.



Part V Maintenance

NOTE: Pool quality can affect your health. The filter cartridge should be cleaned every day and replaced after 7 days, depending on use. Change water every 7 to 14 days, and use appropriate pool chemicals. Please pay attention to the chemicals. SPA damage resulting from misuse of chemicals in the SPA water is NOT covered by the warranty.

1. Water Balance

We recommend maintaining your water balance levels at: PH value: 6.5 - 8.5; Free chlorine: 3ppm - 5ppm. Purchase a test kit and test your water chemistry value before each use of the SPA or at least once per week.

2. Water Sanitation

We suggest using BROMINE tablets with our chemical floater (see next page) to disinfect the pool's water (Chemical floater should be purchased separately). Open the lid of chemical floater and put some pieces of BROMINE tablets in it. Close the lid and put the floater into the SPA pool.

3. Cleaning the SPA

Clean the SPA pool with soap and water, then rinse thoroughly. Leave it in shady and cool place to air dry.

4. REPAIRS (Little holes or punctures can be fixed with the repair kit included with the SPA)

- A. Find the leak.
- B. Thoroughly clean the area surrounding the leak. Cut a piece of repair material in a round shape larger than the damaged area.
- C. Apply adhesive to the underneath side of the patch and around the area to be repaired. Coat the affected area lightly, but completely, with glue.

D. Put the patch on the damaged area and press down firmly. Allow 12 hours for repair to dry. After patch has dried, apply glue around the edges for a complete seal (let dry 4 hours).



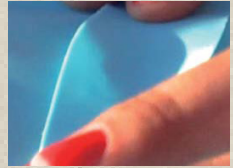
Chemical Floater



1



2



3

Part VI Drainage and Storage

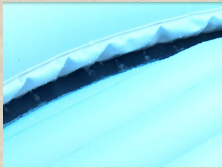
1. Drainage

Check the stopper on the bottom of the pool and the drain cap. Unscrew the drain cap. Drain the water with a garden hose. Remove the stopper on the bottom of the pool. Completely drain all water from the SPA pool.



2. Dry the Pool and Pump

Press the bubbling button to blow out the water inside the jet holes. Unplug the pump, remove the filter cartridge from the inner wall of the pool.

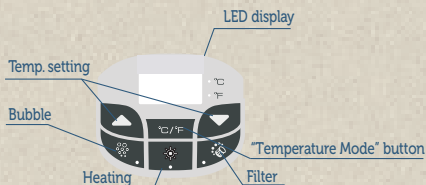


3. Storage

Use a towel to wipe off the pool, dry 24 hours. Unscrew the valves to deflate the pool, fold the pool. It is recommended that store the SPA in its original package in a warm dry place.



Part VII Pump Function



1. LED Display: Once powered-up, the LED displays the current water temperature automatically.

Note: If pressing is valid, you can hear buzzer and relative indicator light will turn on.

2. Temperature Adjustment Buttons: Increase and Decrease temperature setting

Press the temperature adjustment buttons and the LED will flash. When it is flashing, you can set the desired temperature. The value will increase or decrease 1° each time button is pressed. If you hold the button for 2 seconds, the values will rapidly increase or decrease.

3. Temperature Adjustment Ranges: Fahrenheit mode: 86°-104°; Celsius mode: 30°- 40°

To lock the control panel, press Increase/Decrease at same time and hold 3 seconds. It may be helpful to lock the control panel during your absence to avoid changes to your settings. Unlock the control panel by pressing Increase/Decrease at same time again. **“Temperature Mode” Button:** Press the button to exchange Celsius mode and Fahrenheit mode.

4. “Bubble Massage” Button: Press this button to activate the bubble massage system, the green indicator light turns on. It can be turned off by pressing it again.

NOTE:

a) *The massage system will stop automatically after 30 minutes of operation. Re-activate the massage function by pressing the massage button again.*

b) *When filter button is on, pressing bubble button will exchange filter mode into massage mode: filter indicator light will turn off and massage indicator light turn on. If you press the bubble button again, the massage mode will be changed back to filter mode.*

5. Activate Filter System:

This button turns the filter pump on and off. The green indicator light will turn on when the filtration system is activated.

NOTE: *When heating and filter function are on at the same time, pressing button may shut down heating and filter together. When it is on, filter and heater can not be activated. You should shut down first.*

6. Activate Heating and Filtering System at the same time:

Press to activate heating and filtering system at the same time: the green indicator light of filter and red indicator light of heating will turn on at same time. The pump does not stop heating until the current water temperature reaches the set temperature. The heating system will restart automatically after the current water temperature drops 2° below the set temperature. Max. heat temperature: 104°F (40°C)

7. When the filter system has worked 150 hours accumulatively, a buzzer will sound to remind you to clean the filter, at the same time, the light of the filtering function will flash. You can hold the filtering button 5 seconds to turn off the buzzing. The filter system will turn off, you can press the button to active the filter system again.

8. Temperature Mode Adjustment:

a) Press message button and the filter button at same time and hold 3 seconds. The control panel will display “F0”“F1” or “F2”. You can adjust the mode by pressing Increase/Decrease buttons.

b) “F0” “F1” and “F2” means different temperature ranges.

“F0” is for Fahrenheit mode: 86°-104°; Celsius mode: 30°- 40°

“F1” is for Fahrenheit mode: 86°-100°; Celsius mode: 30°- 38°

“F2” is for Fahrenheit mode: 86°-108°; Celsius mode: 30°- 42°

c) Factory settings is “F0” Fahrenheit mode: 86°-104°; Celsius mode: 30°- 40°

NOTE:

If the heat system is activated, the filtration system will automatically start. This is normal.

After turning off the heat system, the filtration system will still work. This is normal.

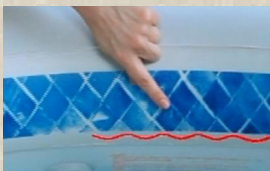
Part VIII

Trouble Shooting

We aim to provide trouble-free spa. If you experience any problem, do not hesitate to contact your local dealer or call 800-759-0977. Here are some useful tips to help you to diagnose and rectify common sources of trouble.

Problems	Causes	Solutions
SPA pump does not operate	<ul style="list-style-type: none"> · Power source 	<ul style="list-style-type: none"> · Power failure, check circuit breaker · Reset GFCI/check if the wiring system is too thin for 1500W or 7A · Call for service if it does not reset
SPA pump does not heat properly	<ul style="list-style-type: none"> · Set temperature is too low · Filter cartridge is dirty · Water level too low · Heating element failed 	<ul style="list-style-type: none"> · Set to a higher temperature · Clean/replace the filter cartridge · Add more water to water level mark · Call for service <p><i>(See further instructions below)</i></p>
Bubble massage system does not work	<ul style="list-style-type: none"> · Pump is too hot · 30-minute auto shut off feature is activated · Something is wrong with the control panel 	<ul style="list-style-type: none"> · Turn off the power. When the pump has cooled, reset the plug and press the bubble button to activate again. · Press the bubble button to reactivate · Call for service if it does not reset
Water filtration is not working	<ul style="list-style-type: none"> · Dirty filter cartridge · Inlet and outlet blocked · Air inside of pump · Control panel malfunction 	<ul style="list-style-type: none"> · Clean/replace the cartridge · Clean the inlet and outlet · Release the air in pump · Call for service if it does not reset
Pump leakage	<ul style="list-style-type: none"> · Improperly sealed adapter · Water leaking from pump body 	<ul style="list-style-type: none"> · Adjust the seal to the right position · Check the pump body, call for service
Spa pool leakage	<ul style="list-style-type: none"> · Spa pool is torn or punctured 	<ul style="list-style-type: none"> · Use provided repair patch as previous outlined
Water is not clean	<ul style="list-style-type: none"> · Insufficient filtering time · Dirty filter cartridge · Pool water quality · Improper water treatment 	<ul style="list-style-type: none"> · Do filtration longer and more frequently · Clean/replace the cartridge · Change the pool water completely · Follow chemical manufacturer's instructions

If the SPA pump does not heat properly, please follow the instructions below.



CHECK 1

Check water level, fill the tub up to the water line, and see if this resolves the pump's malfunctioning.



CHECK 2

Make sure the transparent connection hose covers have been removed before turning on the pump.



CHECK 3

Check inlet and outlet of the SPA, clean and remove any obstructions detected and see if this resolves the pump's malfunctioning.



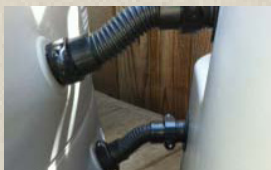
CHECK 4

Check the filter - if it is dirty or scaled, wash or replace the filter and see if this resolves the pump's malfunctioning. Make sure the filter size is appropriate and it is not too dense.



CHECK 5

Check the tub for leaks: make sure the inflation valves are closed tight and are not leaking; if any punctures are detected, repair them with a repair patch. If you cannot find the leak, and the tub is losing air or water, contact customer service.



CHECK 6

Check the connection hoses, making sure that they are not kinked or bent and that both the tub and the pump are set on the same level surface. If you still cannot solve the problem, please contact customer service.



Blue Wave Products

1745 Wallace Ave., Suite B

St. Charles, IL 60174

Tel: 800.759.0977

E-mail: custserv@splashnetxpress.com

www.bluewaveproducts.com